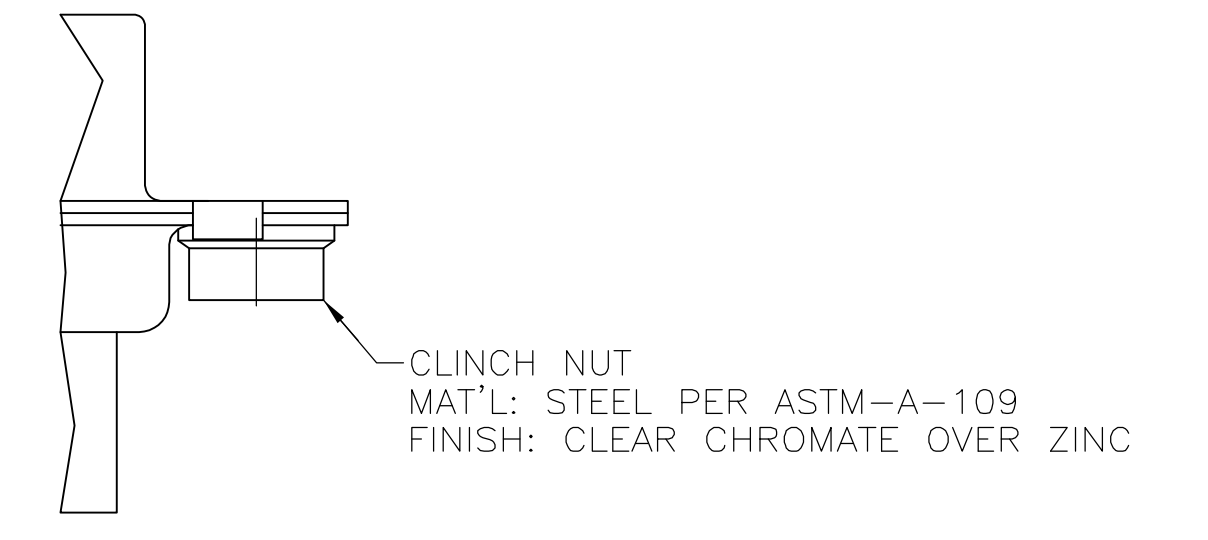
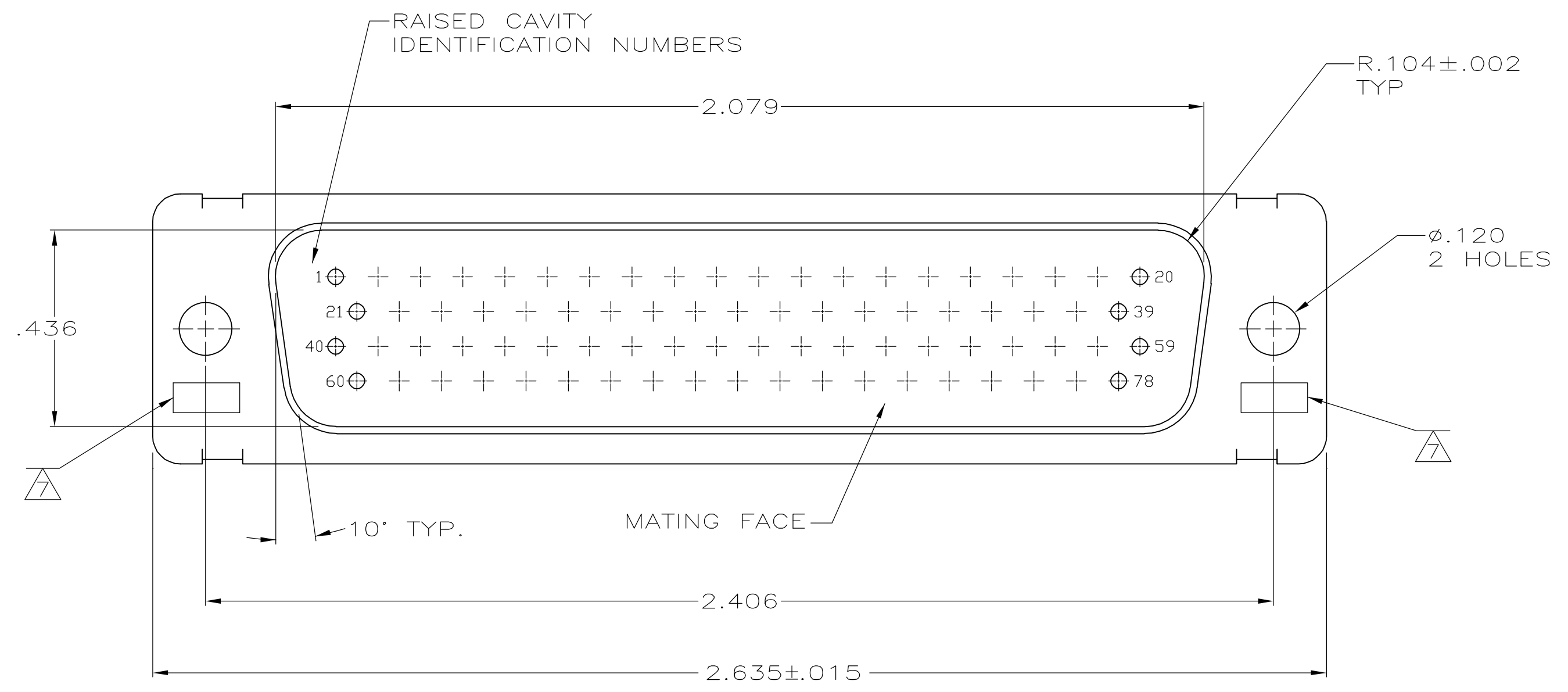
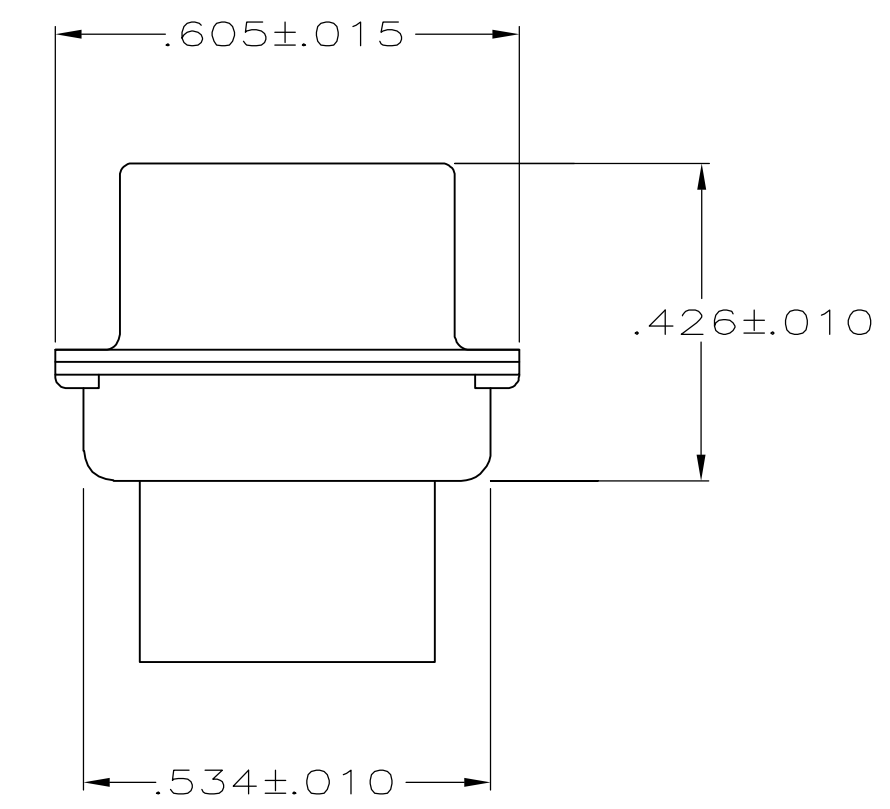
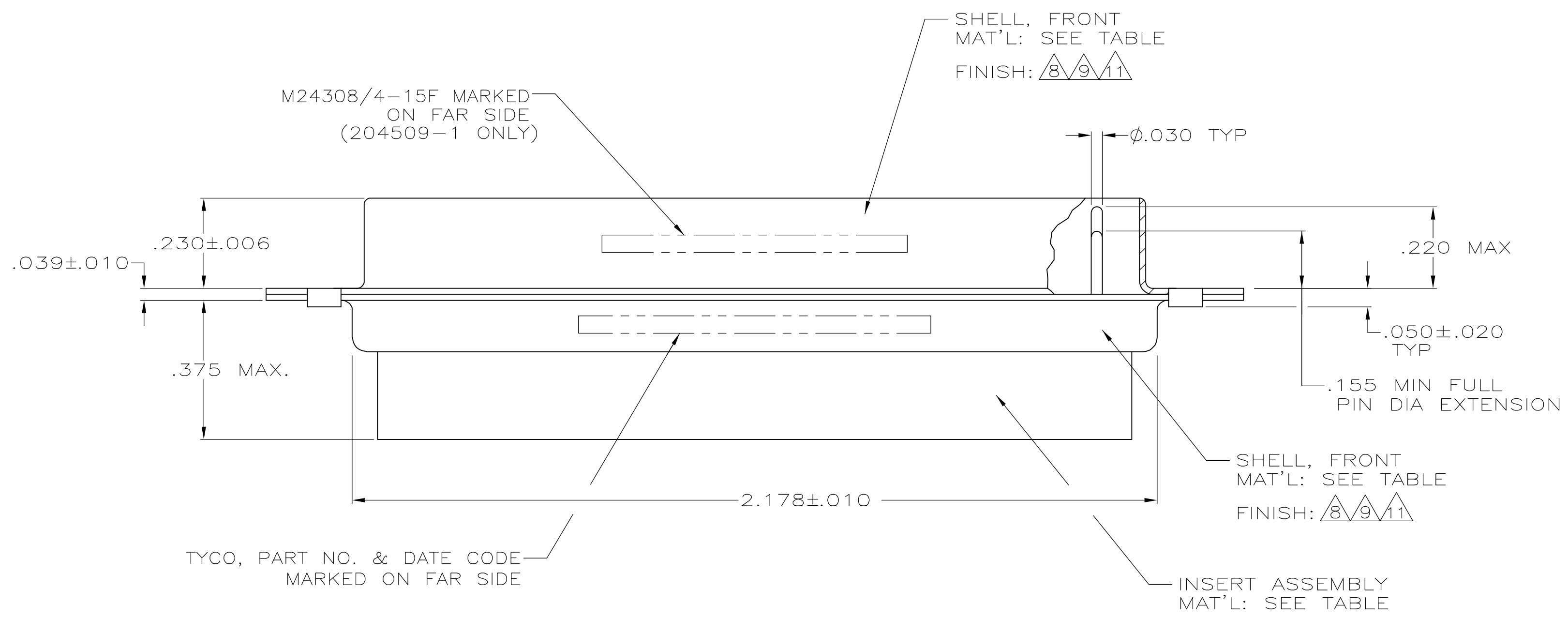


LOC	DIST	REVISIONS			
P	LTR	DESCRIPTION	DATE	DRN	APVD
V		REV PER ECO-05-06315	8-2-05	CT	DM

- 204509-1 IS DESIGNED TO CONFORM TO THE LATEST ISSUE OF MIL-C-24308.
  - MAX WIRE INSUL. TO BE USED WITH THIS PLUG IS .054 DIA.
  - METAL RETENTION CLIPS ARE INCLUDED IN INSERTS.
  - PACKAGE STAMPED M 24308/4-268F, 204509-1 ONLY.
  - THIS PLUG WILL ACCEPT SIZE 22 PIN CONTACT M 39029/58-360 OR ANY TYCO HDD-22 PIN CONTACT.
- ⑩ UL/CSA DESIGNATION STAMPED IN THIS AREA.
  - ⑧ CADMIUM PER QQ-P-416.
  - ⑨ BRIGHT TIN PER ASTM-B-545 OVER COPPER PER AMS2418.
  - ⑩ GROUNDING INDENTS ON FRONT SHELL NOT SHOWN ON DRAWING.
  - ⑪ BRIGHT TIN PER ASTM-B-545 .000400-.000550 THK OVER COPPER PER AMS2418 .000050 MIN THK.



CLINCH NUT DETAIL  
 FOR 204509-6 ONLY  
 2 PLC



REMARKS	FINISH	INK STAMP P/N	SHELL MATERIAL	INSERT MATERIAL	PART NO.	
	⑩		204509-8	STEEL PER ASTM-A-109	GST-40F PER MIL-M-24519 COLDR: BLACK	204509-8
	-		204509-7	STEEL PER ASTM-A-109	GST-40F PER MIL-M-24519 COLDR: BLACK	204509-7
	SEE CLINCH NUT DETAIL		204509-6	STEEL PER ASTM-A-109	GST-40F PER MIL-M-24519 COLDR: BLACK	204509-6
	⑩		204509-5	STEEL PER ASTM-A-109	GST-40F PER MIL-M-24519 COLDR: BLACK	204509-5
SUPSD BY 204509-1	-		204509-3	STEEL PER ASTM-A-109	GST-40F PER MIL-M-24519 COLDR: BLACK	204509-3
SUPSD BY 206504-4	-		204521-5	BRASS	GST-40F PER MIL-M-24519 COLDR: BLACK	204509-2
	-		204521-2	STEEL PER ASTM-A-109	GST-40F PER MIL-M-24519 COLDR: BLACK	204509-1

THIS DRAWING IS A CONTROLLED DOCUMENT. DWN: C.C.THOMAS 13-NOV-99  
 OK: LARRY OH 13-NOV-99  
 NAME: LARRY OH 13-NOV-99  
 PRODUCT SPEC: AMP  
 APPLICATION SPEC: AMP  
 SIZE: A1 CAGE CODE: 00779 DRAWING NO: 204509  
 WEIGHT: - RESTRICTED TO: -  
 CUSTOMER DRAWING SCALE: 4:1 SHEET: 1 OF 1 REV: V

**AMP** Tyco Electronics Corporation  
 Harrisburg, Pa 17105-3608

PLUG ASSY, AMPLIMITE, 78 POSN  
 SIZE 5, SERIES 90